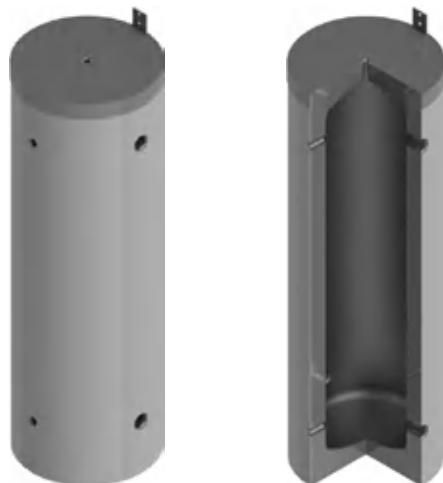


Pufferspeicher für Wärmepumpe
Buffer storage tanks for heat pump
Ballon tampon pour pompe à chaleur
Accumulatori tampone per pompa di calore
PU 50 – 100

EnEV 730.02
ErP 812/2013
ErP 814/2013
SIA 384/1
CE



Bauart
Design | Structure | Struttura

Die Speicher werden aus hochwertigem Stahl nach EN 10025:2019 gefertigt.

EN The storage tanks are made from high quality steel in accordance with EN 10025:2019.

FR Les ballons sont fabriqués en acier de grande qualité, selon la norme EN 10025:2019.

IT Gli accumulatori sono realizzati in acciaio pregiato secondo la norma EN 10025:2019.

Betriebsdruck / Prüfdruck Operating pressure / test pressure Pression de service / Pression test Pressione d'esercizio / Pressione di collaudo	3 bar / 4.5 bar
Einsatzgebiet Application Application Applicazione	18°C – 95°C



Schutz vor Korrosion

Anti-corrosion protection | Protection contre la corrosion | Protezione anticorrosiva

Innen sind die Speicher unbehandelt. Aussen sind die Speicher mit PU-Schaum fix geschäumt.

EN The storage tanks are untreated on the interior. On the exterior the storage tanks are foamed with polyurethane foam.

FR À l'intérieur, les réservoirs ne sont pas traités. À l'extérieur, ils sont recouverts de mousse fixe.

IT L'interno degli accumulatori non è trattato. All'esterno gli accumulatori presentano una copertura di schiuma PU fissa.

Isolierung

Insulation | Isolation | Isolamento

PUR-Hartschaum

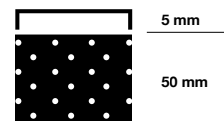
50 mm PUR-Hartschaum fix geschäumt. Skaimantel 5 mm mit Reissverschluss vormontiert, inklusive Rosetten und Abdeckhaube. Brandschutzklasse B2. Silber. Weitere Farben nach Absprache.

EN Rigid polyurethane foam (PUR) 50 mm rigid polyurethane foam. Skai jacket 5 mm with zip preassembled, including cover plates and hood. Fire-resistance rating B2. Silver. Other colours on request.

FR Mousse solidifiée PUR 50 mm de mousse dure PUR Enveloppe en skai de 5 mm préinstallée avec fermeture à glissière, y compris rosettes et capot. Classe allemande de protection incendie B2. Argent. Autres couleurs après concertation.

IT Schiuma PUR rigida 50 mm di schiuma rigida di poliuretano fissa. Mantello in skai da 5 mm pre-assemblato con cerniera, dotato di rosette e calotta di copertura. Classe di resistenza antincendio B2. Argento. Altri colori su richiesta.

≤ 600 L
PUR (Polyurethane)
B2; λ = 0.026 W/(mK)

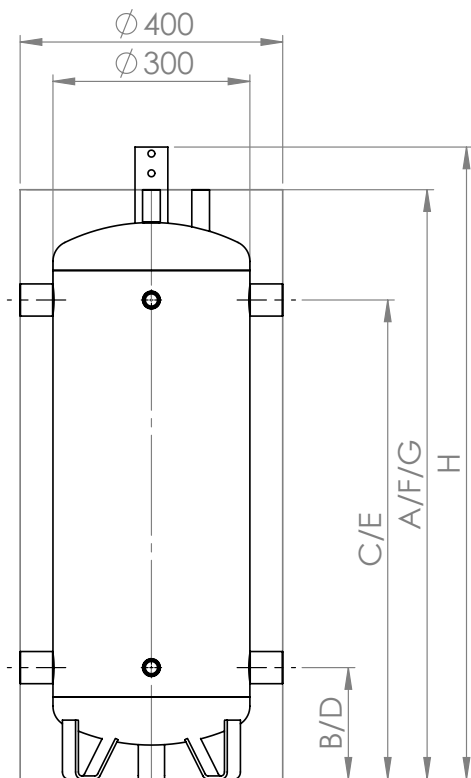


5 mm

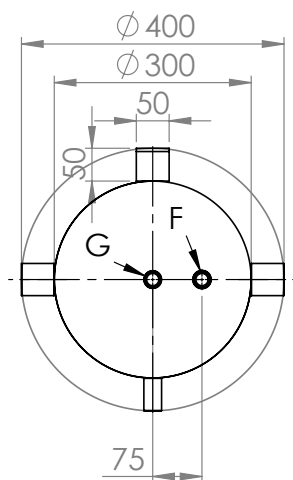
50 mm

Pufferspeicher für Wärmepumpe
Buffer storage tanks for heat pump
Ballon tampon pour pompe à chaleur
Accumulatori tampone per pompa di calore
PU 50 – 100

50 – 100









50 – 100



50 – 100

Isolierung Insulation Isolation Isolamento		50 mm fix eingeschäumt Fixed with foam Enrobage mousse fixe Schiuma rigida fissa		
Verwendung Usage Utilisation Uso	Dimension Dimension Dimension Dimensione	50	80	100
Wärmeverlust Heat losses Pertesthermiques Perdita di calore	kWh/24h	0.95	1.04	1.13
	W	40	44	48
ErP-Klasse ErP class Classe ErP Classe ErP		B	B	B
Gewicht Weight Poids Peso	kg	20	25	30
Art.Nr. Part no. Réf. Art.n.	200101...	0050	0080	0100

	Verwendung Usage Utilisation Uso	Dimension Dimension Dimension Dimensione	50	80	100
	Inhalt Capacity Contenance Contenuto	l	51	75	91
	Kippmass Tilted dimension Cote de basculement Altezza in raddrizzamento	mm	1000	1330	1580
A	Höhe mit Isolierung Height with insulation Hauteur avec isolation Altezza con isolamento	mm	900	1250	1500
B	Rücklauf Return Retour Ritorno	 - mm	170	170	170
		G"	1 ¼"	1 ¼"	1 ¼"
C	Vorlauf Supply Alimentation Mandata	 - mm	730	1080	1330
		G"	1 ¼"	1 ¼"	1 ¼"
D	Fühler Sensor Sonde Sensor	 - mm	170	170	170
		G"	½"	½"	½"
E	Fühler Sensor Sonde Sensor	 - mm	730	1080	1330
		G"	½"	½"	½"
F	Fühlerhülse Sensor sleeve Manchon de capteur Manicotto sensore	 - mm	900	1250	1500
		G"	½"	½"	½"
G	Entlüftung Vent Purge Sfiato	 - mm	900	1250	1500
		G"	½"	½"	½"
H	Höhe Aufhängung Height Hauteur Altezza	mm	965	1315	1565